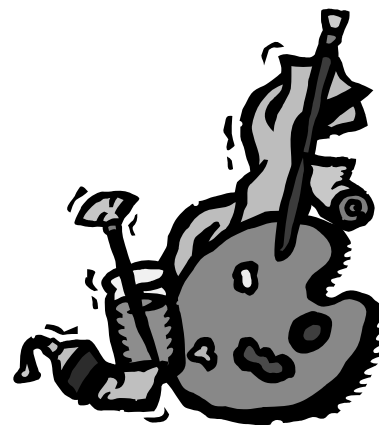


# Art Design & Graphics

## *Examination Board Information*

- AQA
- Advanced – Level
- Certification – Applied GCE in Art and Design



## *Outline of course/units covered*

This course will appeal to those students who have an interest in art and who perhaps would like the opportunity to develop their skills in graphics. It is a creative course, which encourages students to carry out personal investigations and independent learning. This will be offered as a single, six unit, award.

The units covered on this course include:

AS Unit 1 2D Visual Language

AS Unit 2 3D Visual Language

AS Unit 3 Working to a Brief

A2 Unit 7 Application & Development of 2D Visual

A2 Unit 8 Application & Development of 3D Language

A2 Unit 9 Working to Self-Identified Briefs

## *Assessment details*

Two units must be externally assessed. The remaining 4 will be internally assessed.

## *Progression*

Direct entry into employment such as in the graphics industry, or Higher Education.

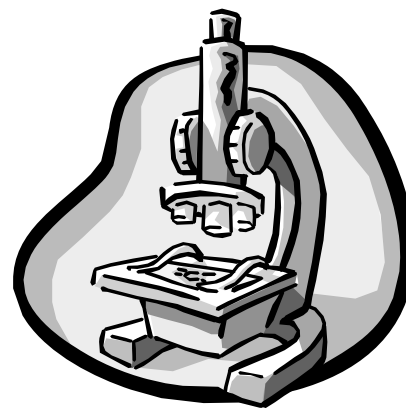
## *Who to contact to further details*

Mr. C.Hopkins or Mr. T.Page

## **Biology**

### ***Examination Board Information***

- ❑ To be confirmed as AQA
- ❑ Advanced - Level 3
- ❑ Certification - GCE Biology



### ***Outline of course/units covered***

This is a new two year course which has been redesigned to provide a seamless progression from the 2008 science GCSE's. This course provides the opportunity to study the fundamental principles of life and living things and develops students understanding of the biology behind scientific issues of current interest including genetic engineering, reproductive biology and the environment.

Traditional coursework has been replaced with an assessment of students practical skills developed throughout the course and an investigative skills assessment in which students perform a set investigative task.

Units covered include; biology and disease, the variety of living organisms, populations and environment, and control in cells and organisms. These are all externally assessed through examination. Practical assessments account for 20% of the total mark at AS and A2.

### ***Progression***

A wide variety of career opportunities can be followed which specifically use A Level Biology including forensics, pharmaceuticals, medical and veterinary work, sports science and physiotherapy.

In addition, the study of science develops many skills such as time management and critical and logical thinking which will improve success in any chosen career path.

### ***Other information***

A double C in Science is the minimum qualification for this course although higher GCSE grades will ensure that the student has a good knowledge base for further study. Enthusiasm and commitment are essential for success.

### ***Who to contact for further details***

Dr. N. Norris

## Business

### *Examination Board Information*

- ❑ BTEC
- ❑ Level 3
- ❑ BTEC Nationals in Business



### *Outline of course/units covered*

BTEC National is a qualification designed to provide a specialist work-related qualification in Business. The National is offered either as a Certificate or Award, depending on choice, completed over a two year duration.

**Four** core units give learners an introduction to and understanding of business activity, management of resources, marketing and communication – all fundamental to the success of business organisations. Those wishing to take the **National Certificate** will then go on to take a further **eight** units across a broad spectrum of business topics (12 units in total), equivalent to two GCE ‘A’ Levels.

The BTEC **National Award** in business consists of four core units plus **two** further units across a broad spectrum of business topics (6 units in total), equivalent to one GCE ‘A’ Level.

### *Assessment details*

All units are coursework units and are assessed internally with external verification.

### *Progression*

The BTEC Nationals in Business have been developed to focus on education and training and to give learners the opportunity to gain a nationally recognised vocationally specific qualification to enter employment in to business sector or to progress to higher education vocational qualifications. Overall, the qualifications provide the learners with the opportunity to develop a range of skills and techniques, personal skills and attitudes essential for successful performance in working life.

The courses will help learners to understand the business world and all its complexities and differing interests which will have an impact for all individuals in whatever environment they choose to work or study in.

Learners will be encouraged to relate their studies to real businesses and wider reading and research is an integral part of the course.

These courses will suit those who are self-motivated and prepared to take responsibility for their own learning. Learners are encouraged to develop their own areas of interest within the world of business.

### *Who to contact for further details*

Mrs J Smith

## Chemistry

### *Examination Board Information*

- ❑ To be confirmed as AQA or OCR
- ❑ Advanced Level 3
- ❑ Length: 1-2 year course
- ❑ Certification: GCE Chemistry



### *Outline of course*

This is a new two year course which has been redesigned to:

- follow on from GCSE Additional Science and develop a student's knowledge and understanding of Chemistry to provide a pathway to further study;
- ensure that learning is enjoyable, and enhances a student's enthusiasm for Chemistry;
- ensure relevance to contemporary issues by building on the concepts of How Science Works that were introduced at GCSE;
- encourage a student to gain hands-on practical skills and data analysis skills;
- study Chemistry in a contemporary context.

### *AS Chemistry Units are:*

Unit 1: Foundation Chemistry (33 <sup>1</sup>/<sub>3</sub> % of the total AS marks)

Unit 2: Chemistry in action (46 <sup>2</sup>/<sub>3</sub> % of the total AS marks)

Unit 3: Investigative & practical skills in AS Chemistry (20% of the total AS marks)

### *A2 Chemistry Units are:*

Unit 4: Kinetics, Equilibria and Organic Chemistry

Unit 5: Energetics, Redox and Inorganic Chemistry

Unit 6: Investigative & practical skills in A2 Chemistry

### *Progression*

The career options are almost endless! AS and A Level Chemistry mix very well with biology, physics and maths, and it's usually essential if you want to do medicine, dentistry, veterinary science, pharmacy or chemical engineering at university. Other career opportunities which specifically use A Level Chemistry include forensics, food technology, sports science, biotechnology and physiotherapy.

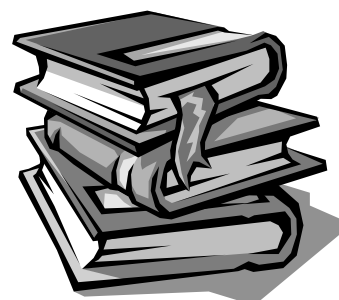
### *Other information*

A double C in Science is the minimum qualification for this course although higher GCSE grades will ensure that the student has a good knowledge base for further study. Enthusiasm and commitment are essential for success.

### *Who to contact for further details*

Mrs J. Hume

# English Literature



## *Examination Board Information*

- ❑ Advanced - Level 3
- ❑ Certification - GCE in English Literature

## *Outline of course/units covered*

This is a two year course which gives students the ability to respond at a high level to literary works of prose, poetry and drama. Students will study at least one Shakespeare play, at least one text from 1300 – 1800, at least one text post 1990, and at AS a text between 1800 - 1945. Appreciation of poetry and prose is an important aspect of the course and students learn the skills of detailed literary appreciation.

Students will study 6 texts at AS level and 6 texts at A2.

## *Assessment details*

There are four units in total: they will be assessed through examination and coursework.

## *Progression*

Higher Education establishments such as universities regard the achievement of an English Literature A Level as a clear guide to academic ability. English graduates enter a wide range of careers including law, politics, journalism, the media, advertising, accounting and many others.

## *Other information*

The minimum qualification to enter this course is a C at GCSE in both English and English Literature.

## *Who to contact for further details*

Mrs S Crawford

## **French/German**

### ***Examination Board Information***

- ❑ AQA
- ❑ Advanced - Level 3
- ❑ Certification - GCE French/German

### ***Outline of course/units covered***

This is a two year course which promotes the ability to understand and respond to authentic contemporary texts written in French/German, drawn from a variety of resources such as magazines, newspapers, reports, books and other forms of extended writing. It also allows students to understand and respond to authentic contemporary spoken language drawn from a variety of French/German resources such as recorded news items, telephone messages, announcements, talks and discussions. Students will learn to manipulate the language accurately in spoken and written forms, select information and present it in the language, organising arguments and ideas logically as well as to seek and provide opinions and information in a spoken interchange in French/German.

### ***Assessment details***

There are four units of assessment which cover the skills of reading, writing, speaking and listening in the chosen language.

### ***Progression***

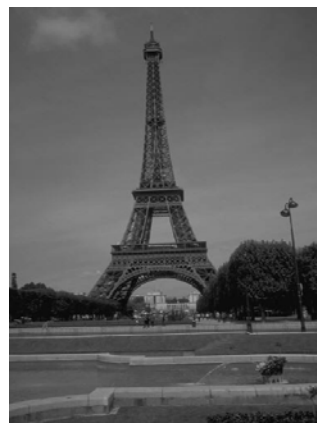
The syllabi pave the way for exciting developments in Modern Languages as students prepare for work, further study, training and leisure in the 21<sup>st</sup> century.

### ***Other information***

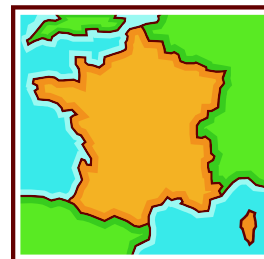
The A Level units are highly flexible and are ideally suited to those students who prefer resource-based learning; supported self-study and the exploitation of new technology (eg inter-active video, CD-Rom, satellite TV, the Internet).

### ***Who to contact for further details***

Mr P Littlefair



## **French Business**



### ***Examination Board Information***

- ❑ OCR/ EDEXCEL
- ❑ Entry level and levels 1 + 2 + 3
- ❑ Certification – Business Language Competence in French

### ***Outline of course/units covered***

This course is flexible and pupils are able to complete the units over the course of the two years. The French is taught in units and is assessed externally. Each Unit will allow pupils to learn and develop their French so that they would be able to get to and from a hotel to a business meeting, learn to understand the language of business meetings and this would lead on to pupils being able to conduct telephone conversations in French and understanding Business documentation.

### ***Assessment details***

There are four parts to the assessment and these cover the four skills; Reading; Listening; Speaking and Writing. The exam is assessed by the board externally.

### ***Progression***

There are 4 levels of exam ranging from entry level which includes learning how to booking hotels; get directions and understand information about meetings to level 3 in which pupils will be able to conduct a phone conversation in French and give a presentation in French.

### ***Other information***

The course provides students with the opportunity to equip themselves with relevant Business French enabling them to be able to work in the International Business environment. There are many resources available to use including inter-active video, CD-Rom, satellite TV, and the Internet.

### ***Who to contact for further details***

Mrs Ampah-Korsah or Mrs Kirwan.

# Geography



## ***Examination Board Information***

- ❑ Exam Board, Edexcel
- ❑ Advanced Level 3
- ❑ Certification - GCE Geography

## ***Outline of course/units covered***

### **AS**

#### Unit 1 Global Challenges

In this unit you will study a range of topics such as Global Hazards, Climate Change and Future Global Challenges.

#### Unit 2 Geographical Investigations

This gives you an opportunity to undertake geographical research, including fieldwork. You will investigate two topics in depth, one of Extreme Weather or Crowded Places (physical geography), and one of Unequal Space or Rebranding Places (human geography)

### **A Level**

As above, then you will learn how the world is contested and develop practical research skills in your chosen area. You will study two units:

#### Unit 3 Contested Planet

In this unit you will consider five key world issues and in the sixth topic discuss possible technological solutions to the problems:

- Energy Security                      - Water Conflicts                      - Biodiversity Under Threat
- Superpower Geographies - Bridging the Development gap - The Technological Fix?

#### Unit 4 Geographical Research

This will allow you to develop further the investigative skills learned at AS level and prepare you for the demands of higher education or employment.

You will choose one topic from these six options:

- Tectonic Activity and hazards                      - Cold Environments
- The World of Cultural Diversity                      - Consuming the Rural Landscape
- Pollution and Human Health at risk
- Life on the margins - the food supply problem

## ***Assessment details***

Unit 1 = 1.5 hr. exam.      Unit 3 = 2.5 hr exam

Unit 2 = 1hr. exam      Unit 4 = 1.5 hr exam

## ***Progression***

Geography A level mixes well with both science and arts and is accepted by universities for both science and arts degrees. Those choosing employment will find employers welcome the wide range of transferable skills which geographers have.

## ***Who to contact to further details***

Mr. A.Marsh

# Health and Social Care



## *Examination Board Information*

- ❑ BTEC
- ❑ Advanced – Level 3
- ❑ Certification – BTEC National Certificate in Health & Social Care

## *Outline of course/units covered*

The National Certificate is a practical work related qualification which is project based and taken over a two year duration, equivalent to two GCE ‘A’ Levels.

The course provides learners with the opportunity to focus on a vocationally specific qualification which is in a growth area in terms of employment.

The qualification provides learners with the opportunity to develop a wide range of skills and techniques, personal skills and attributes essential for performance in all working life but essentially for those who want to work in the health and social care sector.

Learners will be encouraged to relate their studies and base their projects on real life scenarios. Wider reading and research is an integral part of the programme.

The course consists of a number of core units which cover topics such as developing effective communication, development through life stages, personal care and professional development in health and social care, as well as both sociological and psychological perspectives and fundamentals of anatomy and physiology for health and social care. In total, learners will be asked to take 12 units.

## *Assessment details*

All units are coursework units and are assessed internally with external verification.

## *Progression*

The course will suit those who are interested in developing themselves with skills, knowledge and understanding of the various aspects of the caring environment. Learners will need to be self-motivated and interested in the provision of care for the young and old client groups. All learners are encouraged to develop their own areas of interest and take responsibility for their own learning.

## *Who to contact to further details*

Miss S.Wells

# History

## *Examination Board Information*

- ❑ Edexcel
- ❑ Advanced - Level 3
- ❑ Certification - GCE History



## *Outline of course/units covered*

This course develops an historical understanding of British, European and World history. The periods chosen are studied through focused key historical questions. Across the course students will have to look at history in length, breadth and depth whilst developing skills of source analysis, interpretation, essay-writing, evaluation and individual research/enquiry.

Units covered are:

AS - China 1900-49, Civil Rights in the USA 1945-68, Britain 1945-90 (The Conservative and Labour Parties in government);

A2 - England 1642-67 (Civil War, Republic and Restoration) and Russia/The USSR 1856-1964

## *Assessment details*

Of the four units covered, three are externally assessed through examination and one (Russia) is a combination of coursework and an individual enquiry project.

## *Progression*

Universities see the achievement of an A Level in History as evidence of an analytical mind and of academic ability. History graduates enter a wide range of careers including law, politics, journalism, the media, advertising, accounting and many others.

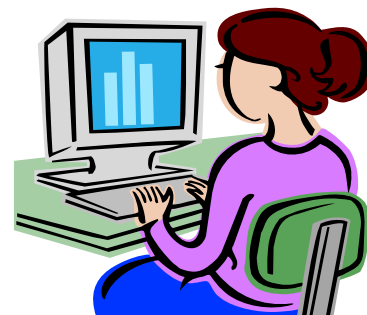
## *Who to contact for further details*

Mr M Kenward

# GCE ICT

## *Examination Board Information*

- ❑ Edexcel
- ❑ Advanced – Level 3
- ❑ Certification – GCE Applied ICT



## *Outline of course/units covered*

- ❑ The Information Age
- ❑ The Digital Economy
- ❑ The Knowledge Worker\*

The topics outlined cover the knowledge and understanding of the components, functions and applications of information systems. They equip learners with a broad range of ICT skills and knowledge of the uses of ICT in vocational contexts.

The overall aims of the GCE ICT are to widen participation of vocationally related learning and allow students to experience the subject and test if this style of learning is suitable to them.

It also provides learners with the technical knowledge, skills and understanding which they will need in the workplace, further education or in training. The delivery of the units encourages students to develop an understanding of the impact of information systems on organisations' personnel, policies and practices. GCE ICT also helps learners to develop project management skills and an understanding of the need to work with others as well as an understanding of the main principles of solving problems using ICT and development of the skills necessary to apply this understanding.

## *Assessment*

Units are assessed via coursework internally, except for Unit 3 (\*above) which is an externally set and assessed assignment.

## *Progression and Future Careers*

We believe that this type of approach will empower learners to take charge of their own development and develop further as ICT end users. These are students who use ICT, typically desktop applications, on a daily basis in a work role to enhance personal productivity, facilitate communication, enable collaborative working etc.

## *Who to contact for further details*

Mr R Geitzmann, Mr A Garden and Mrs J Smith

# Law

## *Examination Board Information*

- To be confirmed
- Advanced - Level 3
- Certification – GCE Law



## *Outline of course/units covered*

Topics are illustrated with actual cases that have appeared before the courts. We keep up to date on the latest cases and use those that appear in the media.

### **Paper one includes these topics:**

1. How the European affects UK law.
2. How judges interpret laws
3. The influence of groups such as the media on the law

### **Paper two includes these topics:**

1. The advantages and disadvantages of the jury system
2. The role of magistrates
3. The role of judges
4. How to get advice if you have a legal problem. This includes a study of no win no fee companies
5. The work of solicitors and barristers

### **Paper three includes these topics:**

1. Some aspects of criminal law such as Assault and Battery, ABH and GBH
2. Sentencing policy; imprisonment-length of sentences; fines; probation
3. Tort of negligence where, for example, a hospital can be sued for being negligent in treating patients. We look at the damages that people can be awarded if they win their case.

There are two exams, Unit 4 and 5, on criminal law covering; murder; manslaughter; GBH; arson, theft; robbery; criminal damage to property; deception. We also look at defences such as insanity, intoxication and self-defence.

There is one exam, Unit 6, on law and morality, justice and human rights, responsibility for crimes.

## *Assessment details*

There are three written exams, each year. There is no coursework for this course.

## *Progression*

Higher Education, employment or training

## *Who to contact to further details*

Mrs. G.Davies (Mount Grace)

## Mathematics

### *Examination Board Information*

- Edexcel
- Advanced – Level 3
- Certification – GCE Mathematics



### *Outline of course/units covered*

Students will study the following units:

Core Mathematics 1, 2, 3 and 4

Statistics 1

Mechanics 1

Advanced level mathematics requires students to develop the ability to think logically, problem solve and reason arguments. The course will provide an excellent complement to business and science courses.

### *Assessment details*

Units are assessed on a modular basis by examination.

### *Progression*

Advanced level Mathematics is particularly relevant for careers in Business Management or other financial sectors, such as Accountancy.

There is an opportunity for more able pupils to study Further Mathematics in affiliation with the University of Hertfordshire.

This course is suitable for those wishing to study Mathematics or Sciences at university.

\* In addition Further Maths A Level may be available.

### *Who to contact to further details*

Mr A Russell

# Media and Production



## *Exam Board Information*

- OCR
- Certificate in Media
- Diploma in Media
- Extended Diploma in Media

If you want to pursue a career in the media then this is the right course for you in Year 12/13. This course will develop the broad range of skills necessary to work in the media. It will also prepare you for more advanced study at a higher level. You will learn detailed knowledge of the media industry.

There are **four units** that are mandatory:

**Unit 1 Introduction to the media**

**Unit 2 Pre-production**

**Unit 3 Production**

**Unit 4 Marketing media and audience feedback**



The OCR Level 3 Nationals in Media contains three different types of qualifications, each one building up your level of expertise.

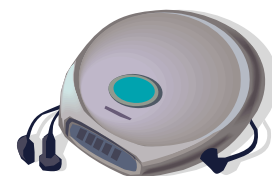
- To achieve the **Certificate**, you must complete a total of 6 units consisting of the four mandatory units (as listed above) and two optional ones.
- To achieve the **Diploma**, you must complete a total of 12 units consisting of the four mandatory units (as listed above) and 8 optional units.
- To achieve the **Extended Diploma**, you must complete a total of 18 units consisting of the four mandatory units (as listed above) and 14 optional units.

All units are assessed through assignments set and marked by the teachers of the subject; this is then moderated by OCR Visiting Moderators.

- This course will allow you to enter employment at a trainee level
- Go to a college or university to study for HND or degree-level course such as journalism or advertising and marketing
- Start work at an assistant level and undertake a related NVQ or other occupational qualifications

## *Who to contact to further details*

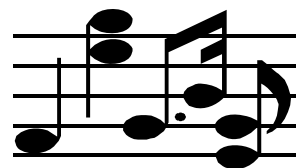
Mrs Bierman and Mr Pytches



# Music Technology

## *Examination Board Information*

- ❑ Edexcel
- ❑ Advanced – Level 3
- ❑ BTEC National Certificate [Double Award]
- ❑ BTEC National Award [Single Award]



## *Entry Requirements*

Four GCSE's at grades A\*-C

## *Outline of course/units covered*

A BTEC National is a practical, work related course. You learn by completing projects and assignments that are based on realistic workplace situations, activities and demands. You focus on a particular subject area and develop a range of specialist skills and knowledge.

The course is made up of different units –Core units which are compulsory and Specialist units which are chosen by the Course tutor.

## *Compulsory Units*

- ❑ Studio Production Process
- ❑ Studio Production Project

## *Specialist Units – include:*

- ❑ Multimedia Sound Production
- ❑ Sound for the Moving Image
- ❑ The Music Industry
- ❑ Sound Recording Techniques

## *Assessment details*

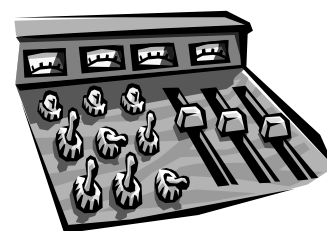
All units and assignments are assessed and graded internally and externally, and an overall grade for the qualification is awarded.

## *Progression*

Further Education, Employment or University

## *Who to contact to further details*

Mr Y. Christophides



## **Performing Arts - (Acting)**

### ***Examination Board Information***

- Edexcel
- Level 3
- BTEC Certificate is a single award (maximum 120 UCAS points)



### ***Who is this course for?***

The Level 3 BTEC National Award offers a focused qualification for learners who wish to pursue a career in acting as this course offers a broad sweep of acting and performance training. Assessment is made through a series of performances in either workshop or public performances.

### ***BTEC Structure***

Each learner will have to complete both core units:

- Principles of Acting
- Performing to an audience

Each learner will also have to complete the four additional units, currently these are:

- Classical Theatre Performance
- Contemporary Theatre Performance
- Acting Auditions.
- Devising Plays

### ***Assessment Details***

All units are internally assessed. For each unit, a number of practical tasks and observations will be made, while a portfolio of written and observed evidence for each unit will be submitted by the learner. It is likely that learners will perform in at least 11 performances during the course of study.

Learners **MUST** achieve a **PASS** criteria in each unit to be achieve the National Award. It is possible for any learner that has passed all units to then achieve a Merit or Distinction level award.

### ***Progression***

The BTEC National Award in Performing Arts (Acting) is a valuable and dynamic way into the Theatre business or even into Drama School or University.

### ***Who to contact to further details***

Mr L Parry

## Physical Education: Dance

### *Examination Board Information*

- ❑ Edexcel
- ❑ Advanced – level 3
- ❑ Award – BTEC National Award in Dance
- ❑ Single award



### *Outline of course/units covered*

This course will appeal to those students who have a strong interest in dance and want to develop an understanding of the theory of the subject and develop their own techniques as a dancer and choreographer as well as develop their appreciation skills for professional works. The units to be covered are:

Choreographic Principles  
Performing to an audience x2  
Jazz Dance  
Dance Appreciation  
Rehearsing for performance

This course is taken as a single award and is the equivalent to one A Level.

### *Assessment details*

100% Coursework

The course is made up of 6 Units all units must be covered and completed.

Each unit is graded with a Pass, Merit or Distinction.

120 UCAS points can be gained with a *Distinction*.

### *Progression*

This qualification is suitable for those seeking to enter Higher Education as well as those wishing to find employment. It is a relevant qualification for those wishing to work in the leisure industry.

### *Who to contact to further details*

Mr. D.Roberts or Miss. S.Easton

## **Physical Education: Sport**

### ***Examination Board Information***

- ❑ Edexcel
- ❑ Advanced – level 3
- ❑ Certification – BTEC National Certificate in Sport
- ❑ Double award

### ***Outline of course/units covered***

This course will appeal to those students who have a strong interest in sport and want to develop an understanding of the theory of the subject. The units to be covered are:



Sport in Society      Training and Fitness for Sport  
Sports Development      Practical Individual Sports Study  
Health and Safety in Sport      Leadership in Sport  
The Body in Action      Rules, Regulations and Officiating  
Sports Coaching      Sport as a Business  
Practical Team Sports Study      Fitness Testing for Sport and Exercise

This course is taken as a double award and is the equivalent to two A Levels.

### ***Assessment details***

100% Coursework

The course is made up of 12 Units: All units must be covered and completed.

Each unit is graded with a Pass, Merit or Distinction.

240 UCAS points can be gained with a *Distinction-Distinction*

### ***Progression***

This qualification is suitable for those seeking to enter Higher Education as well as those wishing to find employment. It is a relevant qualification for those wishing to work in the Sports and Leisure industry.

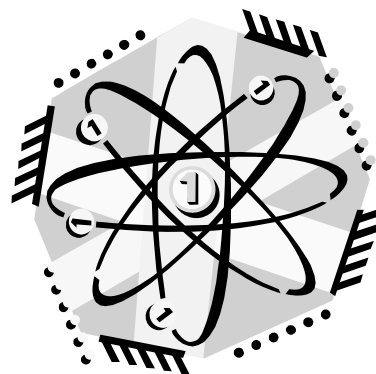
### ***Who to contact to further details***

Mr. D.Roberts or Miss. S.Easton

## Physics

### *Examination Board Information*

- ❑ To be confirmed as OCR
- ❑ Advanced - Level 3
- ❑ Certification - GCE Physics



### *Outline of course/units covered*

**The new AS/A Level Physics has been developed for students who wish to continue with a study of Physics after GCSE.**

Some students may wish to follow a Physics course for only one year as an AS GCE, in order to broaden their curriculum. Others will continue their course for a further year extending their course to Advance GCE.

**AS topics:** Topic 1 is Mechanics (this deals with forces, motion, work and energy – Car Safety); Topic 2 is Electrons, Waves and Photons (this deals with electricity and quantum physics); Topic 3 is Practical Skills in Physics 1.

**A2 topics:** Topic 1 is Newtonian World (this deals with Newton's laws, momentum, circular motion, oscillations and thermal physics); Topic 2 is Fields, Particles and Frontiers of Physics (this deals with electric and magnetic fields, capacitors, radioactivity, nuclear physics, medical imaging and modelling the universe); Topic 3 is Practical Skills in Physics 2.

### *Assessment details*

**AS:** There are three modules of assessment – Two theory modules which are examined in January and June. The third module is an internal assessment of practical skills in Physics.

**A2:** There are three modules of assessment – Two theory modules which are examined in January and June. The third module is an internal assessment of practical skills in Physics.

### *Progression*

The course will prepare students to progress into further education, to follow courses in Physics, Engineering, one of the other sciences or related this deals with Subjects, or to enter employment where a knowledge of physics would be useful.

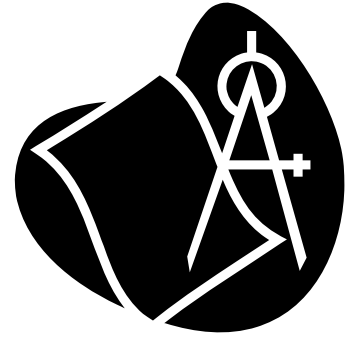
### *Who to contact for further details*

Mr P Nickson

# Product Design

## *Examination Board Information*

- ❑ AQA
- ❑ Advanced Level 3
- ❑ Certification – GCE in Product Design



## *Outline of Course/Units Covered*

This course follows on from GCSE Graphics and Resistant Materials and covers: Materials and components used in designing and making. A wide variety of materials are studied and their qualities assessed.

Design and Marketing influences and an understanding of the broader concepts of the designed work.

Processes and Manufacture. Candidates will carry out a wide range of manufacturing processes in the workshop and they will also have the opportunity to find out how products are made in industry. This section includes CAD/CAM.

## *Assessment Details*

Year 12

- Unit 1 Written paper 15%
- Unit 2 Coursework 20%
- Unit 3 Written Paper 15%

Year 13

- Unit 4 Product Study 15%
- Unit 5 Design Project 15%
- Unit 6 Written Paper 20%

## *Progression*

Direct entry into the Graphics Industry or into Higher Education

## *Other Information*

This course is an obvious follow-on for students who achieve a C or above in GCSE Graphics or Resistant Materials

## *Who to contact for further details*

Miss H Mills

## **Product Design – Textiles**

### ***Examination Board Information***

- ❑ AQA
- ❑ Advanced Level 3
- ❑ Certification – GCE in Product Design - Textiles



### ***Outline of Course/Units Covered***

This course follows on from GCSE Textiles and covers:

Qualities and properties of fibres, fabrics and components used in designing and making.

Design and Marketing influences and an understanding of the broader concepts of the designed work and the role of the designer.

Processes and Manufacture. Candidates will carry out a wide range of making and decoration processes in Textiles and they will also have the opportunity to find out how products are made in industry. This section includes CAD/CAM.

### ***Assessment Details***

Year 12

Unit 1 Written paper 15%

Unit 2 Coursework 20%

Unit 3 Written Paper 15%

Year 13

Unit 4 Product Study 15%

Unit 5 Design Project 15%

Unit 6 Written Paper 20%

### ***Progression***

Direct entry into the Textiles and Fashion Industry or into Higher Education

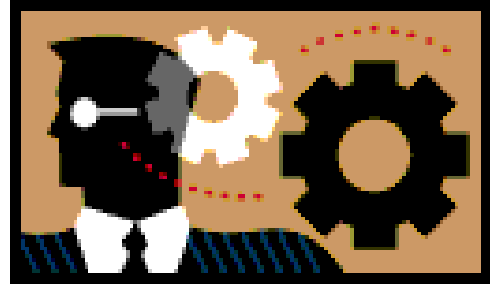
### ***Other Information***

This course is an obvious follow-on for students who achieve a C or above in GCSE Textiles or Art

### ***Who to contact for further details***

Ms U Beveridge

# Psychology



## *Examination Board Information*

- Edexcel
- Advanced - Level 3
- Certification – GCE Psychology

## *Outline of course/units covered*

### **Course Content:**

There are 5 approaches you will cover in Year 12:

#### **Social approach**

This approach looks at how people's behaviour impacts on others. It focuses on prejudice and obedience.

#### **Cognitive approach**

This approach focuses on mental processes, including perception, memory, language and thinking skills.

#### **Biological approach**

This approach focuses on whether genetics are the cause of human behaviour.

#### **Learning approach**

This approach looks at how people and animals are conditioned to behave in particular ways through reinforcements.

#### **Psychodynamic approach**

This approach looks at early childhood experiences and the unconscious mind to explain adult behaviour.

A2 further develops your knowledge and understanding of these topics covered. You will study criminal psychology, child psychology, research methods, issues and debates.

## *Assessment details*

### **AS**

Unit 1: Cognitive and social processes (40% - exam 1 hour 20 minutes)

Unit 2: Biological, Psychodynamic and Learning Theory (60% - exam 1 hour 30 minutes)

### **A2**

Unit 3: Criminal and Child Applications (40% - Exam 1 hour 30 minutes)

Unit 4: clinical Application and Issues & Debates (60% - exam 2 hours)

## *Progression*

Higher Education, employment or training

## *Who to contact to further details*

Mrs I Felton, Mr. M.Kenward or Mrs. G.Davies (Mount Grace)